

# 03

## Telescopic inspection camera

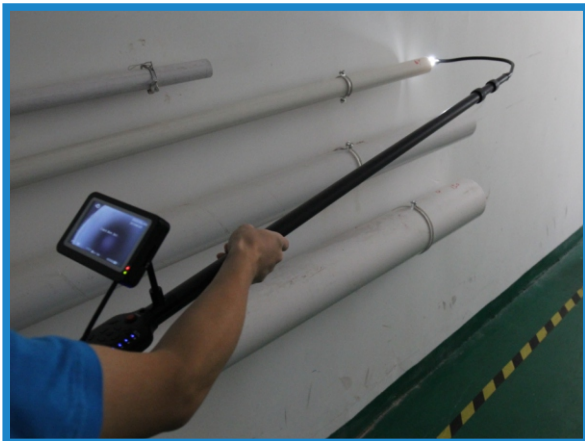
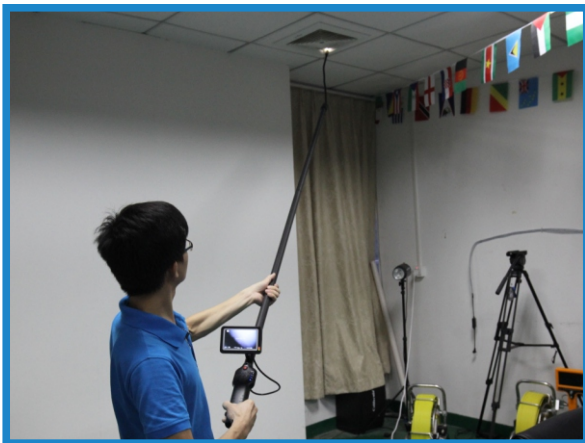


P12



P13

### Application domain



## Model No. WPS-4.3D-LG



Camera Head		Monitor		Control part	
Camera Size:	ø23mmX510mm	Size:	4.3 inch TFT color	Work supply:	DC4.2V
Sensor size:	1/4 inch	Resolution:	480X272	Storage medium:	8G SD card(max 32G) SD card reader
View angle:	120°	Power supply:	DC 5V	Battery level display	
Camera light:	12PCS white LEDs	OSD language:	English	Picture snap & movie record	
Resolution:	PAL: 720X576 NTSC: 720X480	Image reversible		DVR Total Pixels:	720X576 (D1)
Glass material:	Sapphire glass	Model:	16:9	Movie format:	AVI
Shell material:	Stainless steel	<b>18650 Li-ion Battery</b>		Microphone Audio record	
<b>Telescopic pole(for 23mm camera)</b>		Battery amount:	2 pieces	Stereo earphone output	
Pole material:	Carbon fiber	Capacity:	Total 5200MAH	<b>Charger</b>	
Joints of telescopic pole:	3 joints	Charge time:	4hours	Input:	AC100-240V~50/60Hz
Minimum length:	1080mm	Work time:	≥200minutes	Output:	DC 4.2V/2A
Maximum length:	2850mm	Connection mode:	Paralleling		
Total length:	3600mm	<b>Suitcase</b>			
Extended length:	1m/pole	Size:	L1145XW250XH125mm		
		Material:	Fire board & Aluminum alloy		



Camera



Control part



Monitor



Pole



Battery



Charger



Suitcase