


F2 Ultrasonic Flowmeter Spec Table

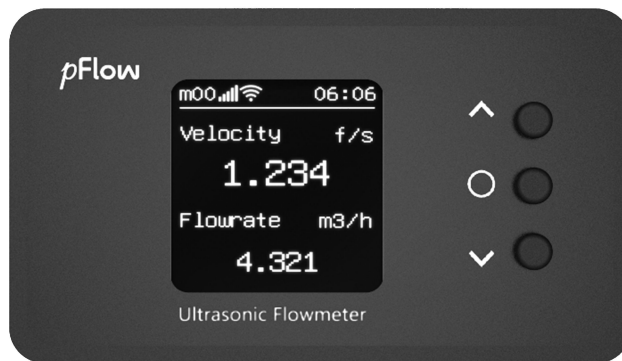
Default Parameters:	
Flow Range: 0.03m/s~±5m/s (0.1 ft/s ~ ±16ft/s) Accuracy: ± 2.0% Repeatability: 0.8% Display: LCD1.44" Keyboard: 3 touch keys Protection Rate: IP54 Housing Enclosure: ABS+PC Material Power supply: 10~36VDC, 500mA Transducer (Flow sensor): Clamp-on type Operating Temperature: 0C°~60C° (32F°~140F°) Cable: 2m (7ft) Length	

Optional Parameters:				
Code		Output (optional 1 of 3)		
1		4-20mA+RS485		
2		WiFi+RS485		
3		OCT Pulse+Relay		
Code		Pipe Material (optional 1 of 4)		
A		A1: PVC	A2: Carbon Steel	A3: Stainless Steel A4: Copper
Code		Pipe Size(optional 1 of 7)		
DN	Nominal		Outer Diameter	
	Metric	Inch	Metric	Inch
	DN20	3/4"	21~29mm	1.05"
	DN25	1"	28~36mm	1.315"
	DN32	1-1/4"	35~43mm	1.66"
	DN40	1-1/2"	46~54mm	1.9"
	DN50	2"	59~67mm	2.375"
	DN65	2-1/2"	72~80mm	2.875"
	DN80	3"	83~91mm	3.5"
You Need: F2 Flowmeter with 4-20mA output + for PVC + for Pipe 3/4"				
So you select: F2-1-A1-DN20				

F2 Product Preview

F2 is with Compact Design, which allows fast installation and convenient flow measurement. The flow meter comprises of 2 flow measurement sensors, clamps, and Central Processing Unit for flow metering.

Non-invasive installation available, the sensors are installed outside the pipe. Easy to install and will not interrupt the manufacturing process. No pressure drop, low maintenance cost.



Installation

The Flowmeter F2 shall be installed in water lines in the direction of the flow.

1 CLAMP THE PIPE STRAPS



2 TIGHTEN THE SCREWS



3 INSTALL THE METER

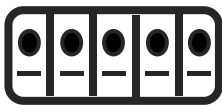


4 FINISH AND POWER ON



Output & Protocol

Optional Outputs:



RS485

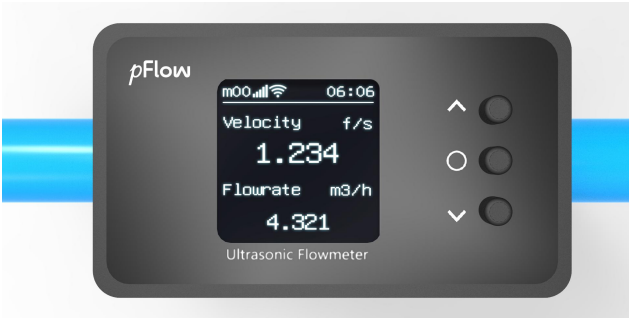
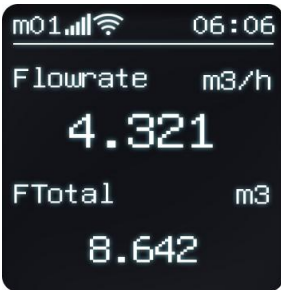
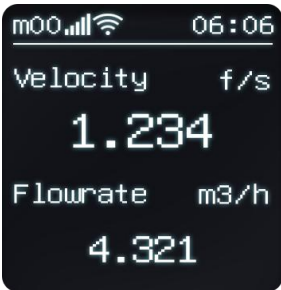


Supporting Protocol:

Modbus

Fuji

Interface



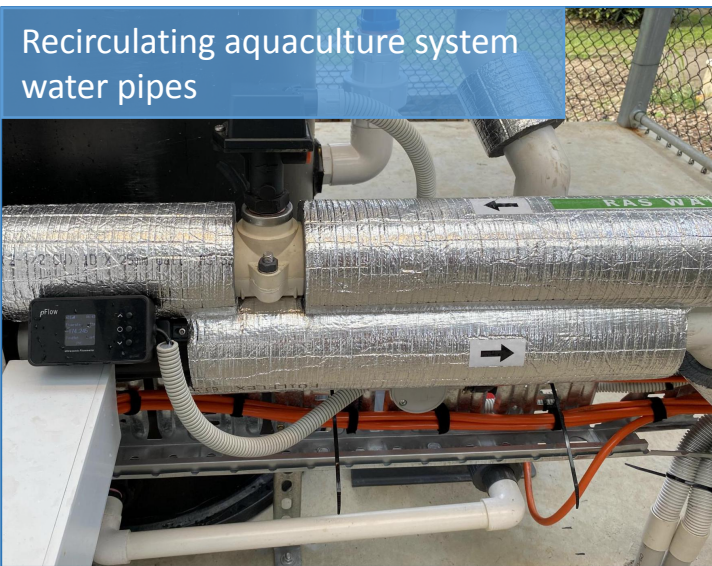
Classical Applications

Water treatment and distribution, pharmaceutical, inland aquaculture, heating and cooling circuits, swimming pools and irrigation systems, fire-fighting installations, automotive industry and energy plants.

HVAC chilled water pipes

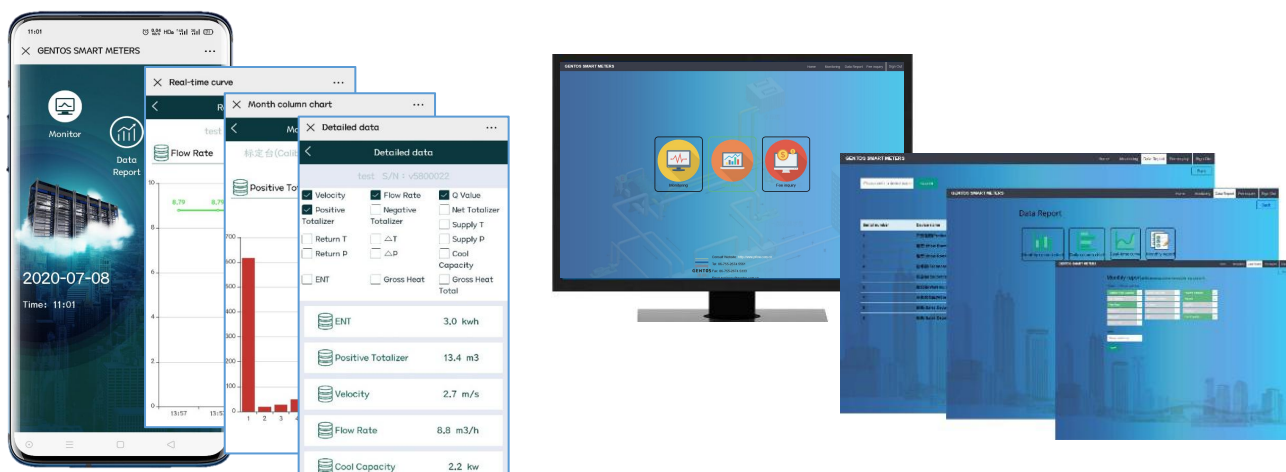


Recirculating aquaculture system water pipes



WiFi & Cloud Service

In addition to supporting the traditional RS485, 4-20mA output, the F2 also supports WiFi output, which is a feature to adapt to the IoT. When using WiFi output, you can use the iCloud service to easily check data from your phone and PC.



Experience Account

ID: gentos

Password: gentos0755