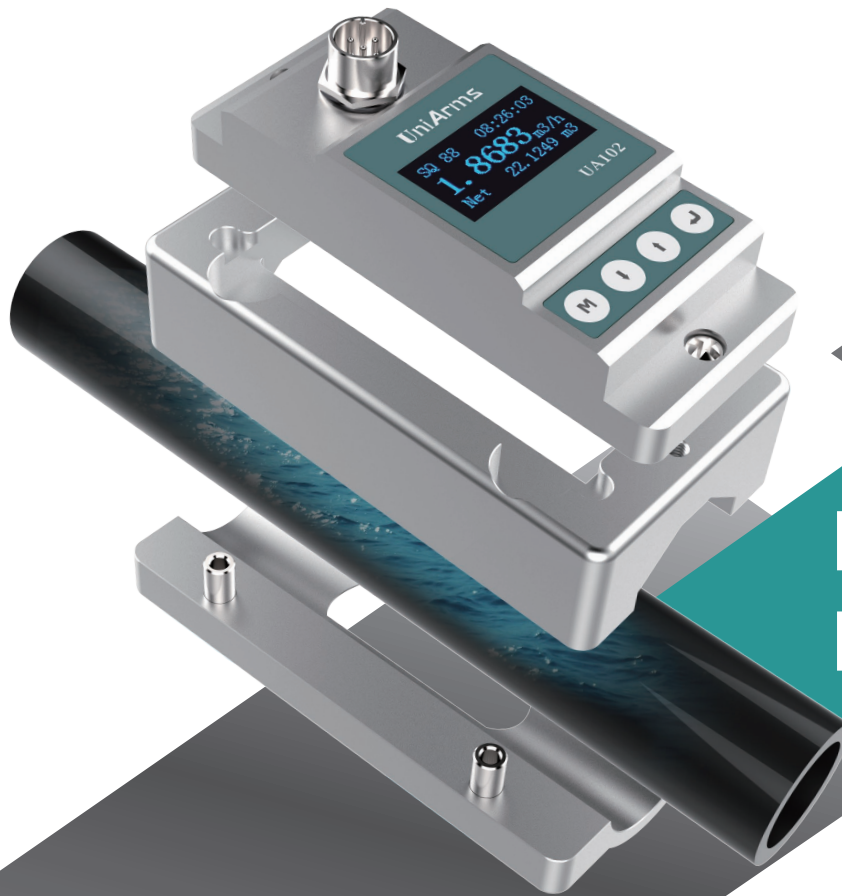


# UniArms



## NO PIPE CUT NECESSARY

### CLAMP ON TYPE FLOW METER

*Clamp on type, No need to cut the pipe;  
Very easy to install, All you need to do is clamp on.  
No moving parts, no need to stop production during the installation.*

# COMMON USES FOR FLUIDS IN FACTORY ENVIRONMENTS

Fluids are used all throughout facilities, each with its own usage and purpose.  
Example: Plate washer water to wash the PCB.

What types of FLUIDS do you utilize in your processes?	How are these fluids used?	How are you addressing these common flow issues?
Water	Cooling	Cooling
oil	cleansing	Machine Protection
Chemical	handling	Usage of actual fluid

## What our Clamp on flow meter could provide?

- Monitor flow directly on unit;
- Check dosage of the liquid;
- Sending signal to PLC;
- Track operation to improve efficiency.

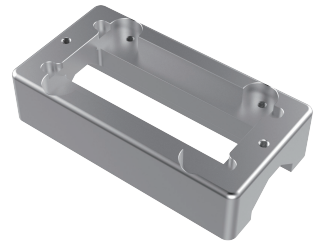
# COMMON USES FOR RESIDENTIAL AND AGRICULTURE APPLICATION

*For monitoring water supply and consumption without cutting pipe.*

## Composition



UniArms



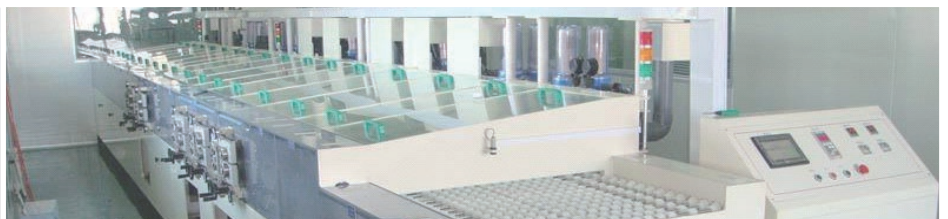
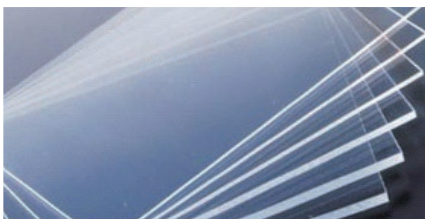
Upper Bracket



Base Bracket



Cable



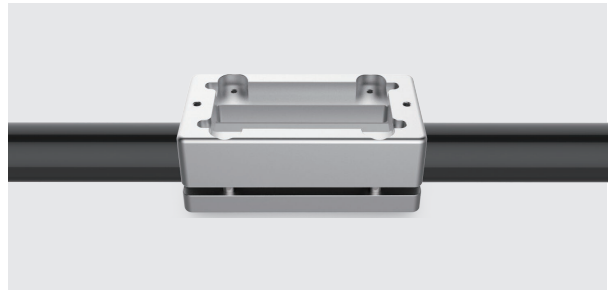
## Simple and easy mounting

## 01 Clean the pipe



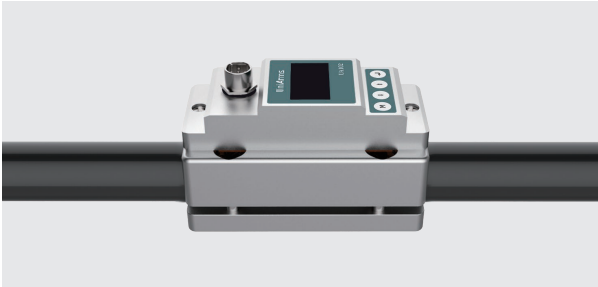
No dirt and oil contamination outside the pipe.

## 02 Install the bracket



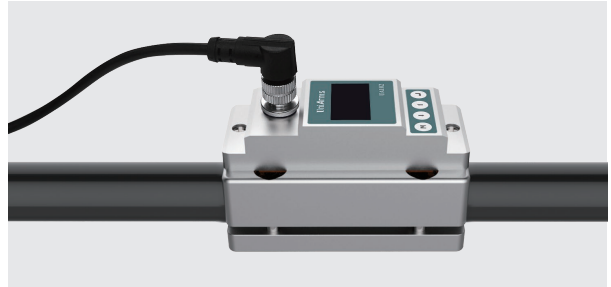
Align flow meter to the pipe position, Install screw on top part of the bracket, the bottom part of the bracket will automatically connect with the top part. Fasten the four M4 screws.

### 03 Install the sensor part



Remove the protection film outside the sensor, put the sensor part into the bracket, Fasten the 2 M4 screws.

## 04 Cable connection



Take out the cable,fasten it on the socket

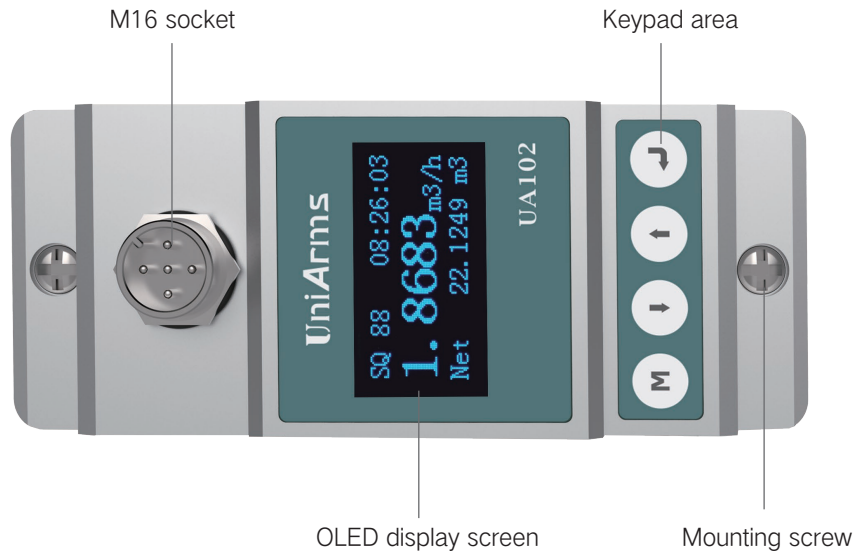
## 05 Operation



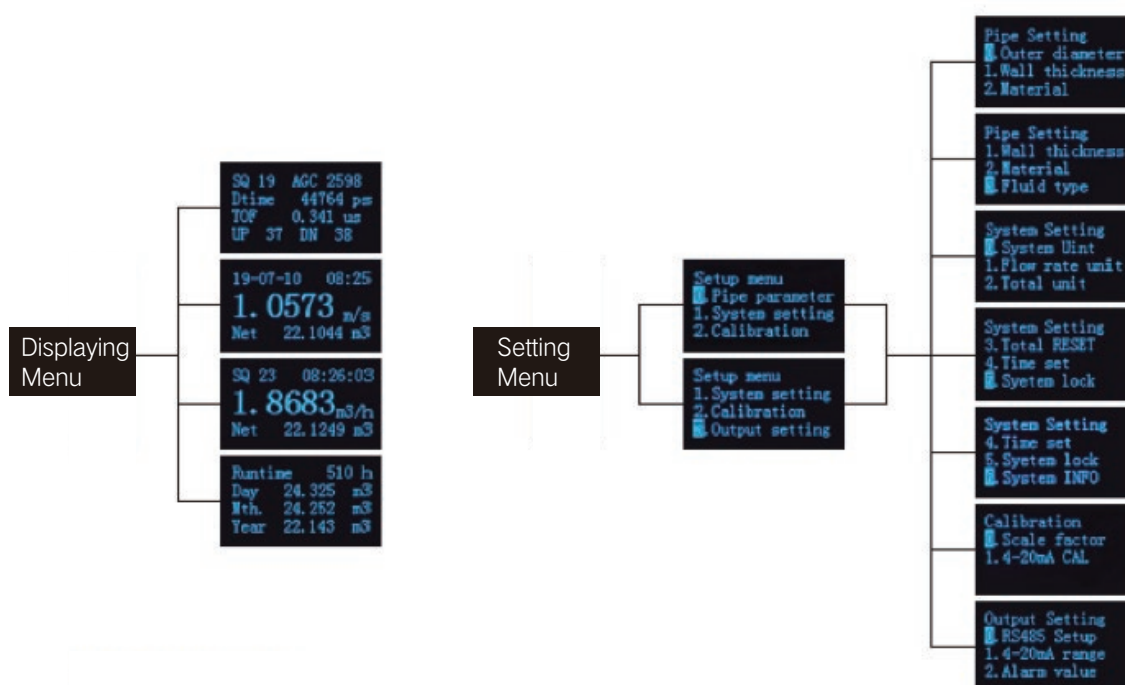
Power on and see if the  $SQ \geq 50$  which indicates that the measurement has been stable.

## Setup

\*For different pipe diameters and pipe designs, the factory defaults have defaulted to the specified standard settings. there is no need to reset.



## Menu



## Specification

Model No	UA102
Flow range	0.1 m/s ~ 5.0 m/s
Accuracy	2.0% ( +/-0.3m/s ~ 5.0m/s)
Repeatability	0.8%
Pipe size	Φ 25(DN20)、 Φ 32(DN25)、 Φ 40(DN32)
Data storage	Daily, Monthly, and Annual Flow Totalizer;
Analog output	0/4 ~ 20mA, Maximum load:600 Ω
Alarm output	OCT upper and lower limit alarm function (optional)
Communication	RS485
Power supply	24 VDC
Cable length	1.2m
Key panel	Four touch buttons
Display	OLED 128*64 dot-matrix display screen
Unit	Support metric unit selection, Cubic Meters(m3), Liters(1), USA Gallons(GAL). /hour、 /min , The factory default unit is cubic meters per hour。
Totalizer	6 bit flow rate totalizer.
Pipe material	Carbon Steel , Stainless Steel , PVC.
Housing material	aluminium alloy
Ambient temperature	0°C- 50°C
Fluid temperature	0°C- 50°C
Ambient humidity	RH 0~95% , No condensation
IP Rate	IP54
Weight	1.5kg